



**Idea**



### Comfort and Safety

Active and passive safety devices are incorporated into the machine, which complies fully with the directives of the CE mark.

## Idea

**With the Idea key-cutting machine Silca inaugurates a new style of duplication for code cutting and copying bit and double bit, pump, and 'English' keys \* (with shoulder). This electronic key-cutting machine guarantees precision within hundreds of millimeters with both methods of cutting (code and copying). The main innovative characteristics of the machine, which is designed to meet the needs of professional key-cutters, are its accuracy and ease of use. Idea works as a stand alone or connected to a personal computer.**

## Idea Stand Alone

As a stand alone IDEA cuts keys by code or copying through simple operating sequences entered on the convenient keypad housed in a central position where it is easily accessed and used. The machine memory holds over 300 different cutting and decoding systems, and memorize over 1000 cutting systems. Gauging, configuration and diagnostics are carried out rapidly and controlled by the numerous automatic devices on the machine.

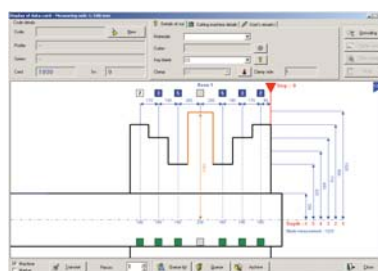
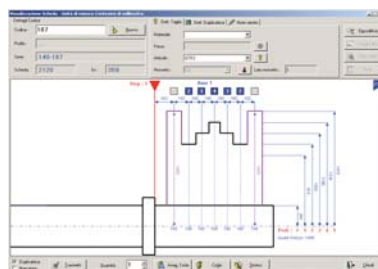


The programs and database on the machine can be updated easily and quickly through a PC serial port.

## Idea with Personal Computer

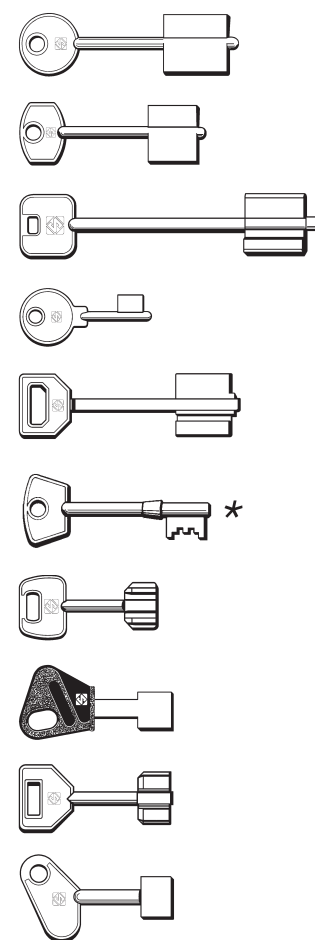
Using the IDEA key-cutting machine with a personal computer allows you to fully exploit its potential. Besides the functions described above for the stand-alone, the Silca Key Program makes it possible to:

- process and manage your list of customers
- plan work queues
- search for references by direct or indirect codes
- search by partial cuts
- (\* only for shoulder stop keys)
- create customized key-cutting systems.



For each system selected, Silca Key Program provides the technical data and all information relating to the selected key and the cutting system required.

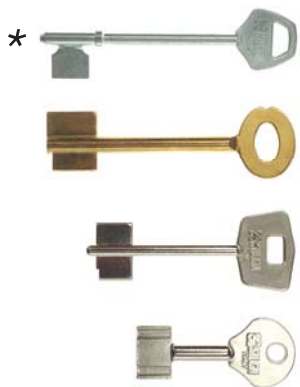
**SW Program available in 5 languages.**



**SINGLE AND DOUBLE BIT,  
PIN, PIPE AND PUMP KEYS**

# Idea





## Plus

### 1 Automatic operation

Idea carries out a wide range of operations automatically, ensuring precision and speed for the cutting cycle of any type of key.

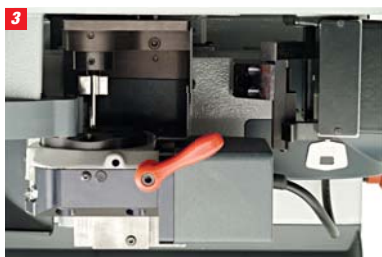
### 2 Electrical contact

An innovative gauging system by electrical contact makes it possible to identify the correct dimensions of the key automatically with absolute precision.



### 3 Axes gauging

Carried out automatically by the key-cutting machine.



### 4 Optic reader

Absolute precision in reading the key, due to the patented laser optic reader.

Gauging the optic reader: the optic reader is gauged automatically by the machine.

### 5 Carriage advancement speed

The possibility to select a suitable carriage advancement speed makes for maximum precision in cutting keys in any type of material.



### 6 Profile radius

The key-cutting machine automatically creates the radius progressively on the bit profile. This innovative function gives optimized cutting cycle times without the operator having to do anything.

### 7 Key grip

Used to position the original key rapidly and accurately, the key grip is designed to hold a wide range of keys with stems of different diameters.

### 8 Swarf box

The swarf collection box helps to keep the work area clean. It is located close to the cutter and slants so that the swarf collects and is removed from the work area.



### 9 Clamp

Universal clamp, 360° rotation, used for cutting both sides of the key bit.

It is designed to house a tailstock with which to cut bit and double bit keys, male and female, without the need for additional optional devices.

### 10 Cutter

1.25 mm carbide cutter.

Other types of cutters are available on request.





**SILCA S.p.A.**  
Via Podgora, 20 (Z.I.)  
31029 Vittorio Veneto (TV)  
Phone: +39 0438 9136  
Fax +39 0438 913800  
E-mail: [silca@silca.it](mailto:silca@silca.it)  
[www.silca.biz](http://www.silca.biz)

**In the United Kingdom**  
**Silca Ltd**  
Unit 6 Lloyds Court  
Manor Royal  
Crawley RH10 9QU  
Phone: +44 1293 531134  
Fax +44 1293 531108  
E-mail: [sales@silcalt.co.uk](mailto:sales@silcalt.co.uk)  
[www.silcalt.co.uk](http://www.silcalt.co.uk)

**In Germany**  
**Silca GmbH**  
Siemensstrasse, 33  
42551 Velbert  
Phone: +49 2051 2710  
Fax +49 2051 271172  
E-mail: [info@silca.de](mailto:info@silca.de)  
[www.silca.de](http://www.silca.de)

**In France**  
**Silca S.A.S**  
12, Rue de Rouen  
Z.I. Limay - Porcheville  
78440 Porcheville  
Phone: +33 1 30983500  
Fax +33 1 30983501  
E-mail: [info@silca.fr](mailto:info@silca.fr)  
[www.silca.fr](http://www.silca.fr)

**In Spain**  
**Silca Key Systems S.A.**  
C/Santander 73A  
08020 Barcelona  
Phone: +34 93 4981400  
Fax +34 93 2788004  
E-mail: [silca@silca.es](mailto:silca@silca.es)  
[www.silca.es](http://www.silca.es)

**In the Netherlands**  
**H. Cillekens B.V.**  
Metaalweg, 4  
NL-6045 JB Roermond  
Phone: +31 475 325147  
Fax +31 475 323640  
E-mail: [info@hcillekens.nl](mailto:info@hcillekens.nl)  
[www.hcillekens.nl](http://www.hcillekens.nl)

**In Columbia**  
**FlexonSilca S.A.**  
Km 1.5 Via Briceño-Zipaquira  
Parque Ind. Trafalgar Bodega 3  
Tocancipa-Cundinamarca  
Phone: +57 1 7366480  
Fax +57 1 7366490  
[www.flexonsilca.co](http://www.flexonsilca.co)

**In Brasil**  
**Kaba do Brasil Ltda**  
Rua Guilherme Asbahr Neto, 510  
São Paulo, SP 04646-001  
Phone: +55 11 55454520 / 29  
E-mail: [silca@kabadobrasil.com.br](mailto:silca@kabadobrasil.com.br)  
[www.silcachaves.com.br](http://www.silcachaves.com.br)

**In China**  
**Minda Silca Engineering Ltd.**  
Plot no. 37- Toy City  
Greater Noida-201308, U.P.  
Phone: +91 9871397630/31  
Fax +91 120 2351301  
E-mail: [info@mindsilca.in](mailto:info@mindsilca.in)  
[www.mindsilca.in](http://www.mindsilca.in)

# Idea



## Technical Data

|                          |   |
|--------------------------|---|
| <b>Motor</b>             | Single phase with heat probe  |
| <b>Power supply</b>      | Single phase 230V/50Hz  |
| <b>Clamp</b>             | 360° rotating universal clamp, controlled by magnetic positioning sensor                            |
| <b>Movement</b>          | On 3 axes, controlled by pre-loaded ball screws activated by step motors on rectified roller guides |
| <b>Cutter speed</b>      | 800 rpm   |
| <b>Axes runs</b>         | X=37 mm, Y=40 mm (B=360° rotation)  |
| <b>Cutting tolerance</b> | Axes: +/- 0.05 mm   |
| <b>Dimensions</b>        | Height 450 mm (720 mm), Width 400 mm, Depth 520 mm  |
| <b>Net Weight</b>        | 46,4 Kg   |

## Optional Adapters



Jaw for Pump Keys

There are numerous optional adapters, designed to make positioning of different types of keys quick and simple



Jaw for Shoulder Stop Keys



8 003737 523394